

# 45 LYME ROAD HANOVER, NEW HAMPSHIRE

## Suite 206



½ mi to Dartmouth College  
4 mi to Dartmouth Medical Center



Free onsite parking  
Advance Transit regional bus line



On- site management  
24/7 maintenance



Suite 206 is a cozy and professional office located on the second floor at the Lyme Road Professional Center and is available for lease on January 1, 2024. Suite 206 enjoys a nice view with two windows and good lighting.

Furnishings may be sold and included.

Building amenities include a professional lobby with elevator, shared restrooms, central mailroom. Central heat/air, electric, water, rubbish/recycling are included as additional rent (NNN). Tenant is responsible for their telecomm and interior office cleaning.

Total monthly rent is estimated to be \$675/month

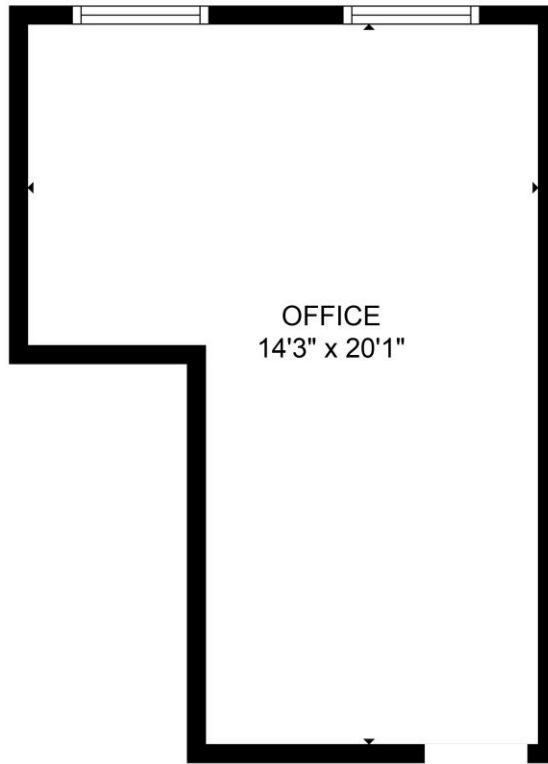
---

Amy Margolis  
[amy@lpmnh.com](mailto:amy@lpmnh.com)

Rates vary by term and fit up

Lebanon Property Management, Inc.  
[www.lpmnh.com](http://www.lpmnh.com) | (603) 448-3524

All information provided is believed to be accurate however neither the property owners nor Lebanon Property Management makes any guarantees, warranties, or representations about the completeness or accuracy of the information contained herein. Any projections, opinions, assumptions or estimates are for example only. Material differences can occur. It is the responsibility of the customer and any interested party to verify all information, estimates, and projections to their satisfaction. Neither the owner nor Lebanon Property Management accepts any liability for any loss or damage as a result of reliance upon this information.



GROSS INTERNAL AREA  
FLOOR 1: 231 sq. ft  
TOTAL: 231 sq. ft

MEASUREMENTS ARE CALCULATED BY CUBICASA TECHNOLOGY. DEEMED HIGHLY RELIABLE BUT NOT GUARANTEED.

Total usable area 231 sf

Total rentable area 282 sf\*

(\*includes proportionate share of common areas)

---

Amy Margolis  
[amy@lpmnh.com](mailto:amy@lpmnh.com)

Rates vary by term and fit up

Lebanon Property Management, Inc.  
[www.lpmnh.com](http://www.lpmnh.com) | (603) 448-3524

All information provided is believed to be accurate however neither the property owners nor Lebanon Property Management makes any guarantees, warranties, or representations about the completeness or accuracy of the information contained herein. Any projections, opinions, assumptions or estimates are for example only. Material differences can occur. It is the responsibility of the customer and any interested party to verify all information, estimates, and projections to their satisfaction. Neither the owner nor Lebanon Property Management accepts any liability for any loss or damage as a result of reliance upon this information.